

# Aggregate and Firm level volatility: the role of acquisitions and disposals.

Luke Devonald                      Chris Higson  
University of Cambridge      London Business School

Sean Holly\*  
University of Cambridge.

August 2017

## Abstract

The purpose of this paper is to revisit an intriguing finding. Although over the last few decades leading up to the financial crisis there was a marked reduction in the volatility of aggregate output and inflation, there appears to have been a corresponding increase in the volatility of individual firms. Here we argue that this apparent increase in firm level volatility was due to an increase in churning of firm activity in the form of acquisition and disposal of businesses. This created an increase in negative covariances between firms, so while the volatility of underlying organic growth has also fallen, observed volatility has risen.

JEL: D12, E52, E43.

Key-Words: Volatility, firm level growth.

---

\*We are grateful to the Keynes Fund, Faculty of Economics, Cambridge for their financial support. Address for Correspondence. Faculty of Economics, Sidgwick Avenue, Cambridge, UK. e-mail: sh247@cam.ac.uk. Phone +44-1223-335247.

# 1 Introduction

A puzzle of the years before the financial crisis of 2008-9 was that, while aggregate volatility in both output and inflation had fallen to historic lows, there had been an apparent rise in volatility at the firm level. Campbell, Lettau, Malkiel, and Xu (2001), amongst others, document increasing stock price volatility. A series of papers using the Compustat dataset report growing sales growth volatility for public listed firms (Chaney, Gabaix, and Philippon, 2002, Comin and Philippon, 2005, Comin and Mulani, 2006). On the other hand, using the LBD database that contains plant level data on all US firms, Davis et al (2006) find that, overall, firm volatility has declined and conclude that the increased volatility among public firms was overwhelmed by a fall in the volatility of private firms.

Comin and Philippon (2005) developed an explanation for the volatility puzzle in which the growing importance of proprietary assets such as R&D leads to increasing idiosyncratic volatility at the firm level but falling covariance between firms. In this paper we argue that there is a simple data-consistency explanation why the observed volatility in sales growth in the Compustat population is a misleading correlate for US macroeconomic volatility. An increase in the churning of firm activity raises sales when firms acquire other firms and reduces sales when firms dispose of businesses by selling them to other firms. This market for corporate assets created an increase in negative covariances between firms, so that, even if the volatility of underlying organic growth had fallen during the great moderation, observed volatility in the population of quoted companies rose.

Though in terms of GDP, the acquisition or divestiture of firms in the economy is a neutral event (at least in the short run), it has a significant effect on the reported sales volatility of individual companies. Comin and Mulani (2006) recognize this problem but imply that the problem is with large takeovers and can be addressed by winsorizing at, say, sales growth rates above 50%. In fact, some firms exhibit organic growth rates of this level. But quite small transactions generate significant churning in terms of observed sales growth. As we show, there are many such transactions.

In our sample for 1982 to 2015 with a total number of firm/years of 52,359 when acquisitions took place, and 32,663 firm/years when firms divested, there were 9950 firm/years when a firm both acquired and divested in the same year. The total number of firm/years in our sample was 295,622. But these figures mask the total number of transactions since a single firm might acquire more than one firm in a given year and dispose of more than one business in a given year. On this basis there were 103,707 acquisitions and 49,003 disposals.

In a later paper Comin et al claim to adjust for the effect of takeovers, but do not explain how they do it. It seems likely that they used Compustat variable 249, ‘the effect of acquisitions on sales’. Unfortunately, although this field is available in Compustat, it is sparsely populated and is non zero in only a small fraction of cases where a firm was known to have acquired or disposed of businesses.

The great importance of the market for corporate assets in the US and the role that acquisition and disposal of assets plays in the transmission of technology between firms

suggests that we re-examine some of the theoretical models that underpin research and development. Firms do not just invest in R&D they also consciously purchase other firms or parts of firms to incorporate technologies. The literature on the role of mergers and acquisitions is comparatively thin. On the theoretical side there is Gort (1969) and more recently Xu (2017) and on the empirical side Andrade et al (2001), Andrede and Stafford (2004), Doytch and Uctum (2011) , Maksimovic and Phillips (1998, 2002), Schoar (2002) and Warusawitharana (2007).

In section 2 we first reconsider the volatility result and update the numbers to 2015, to include years before and after the financial crisis. In section 3 we develop a simple model of acquisitions and disposals and show that an increase in the market for corporate assets raises the volatility of firms but leaves aggregate volatility unchanged. In section 4 we turn to the data and combine the quoted company dataset of Compustat with the SDC database of acquisitions and disposals. We show that the information on acquisitions and disposals in Compustat is incomplete and we locate a very large number of transactions from SDC. Although SDC provides valuable information on the occurrence of an acquisition and a disposal it does not always give any information about the value of the transaction nor a direct measure of the effect of this activity on sales of the acquiring or divesting firm. In section 5 we turn to some estimation results. Section 6 concludes.

## 2 Firm and Aggregate Volatility

In this section we reprise and update the work of Comin and Mulani (2006) and Comin and Philippon (2007) using Compustat as the source of company accounts data on individual firms to 2015. We compute a measure of volatility of the *ith* firm as the moving average of the standard deviation of the growth of real sales<sup>1</sup>:

$$\sigma_{i,t} = \sqrt{\left[ \frac{1}{10} \sum_{k=-4}^{+5} (g_{t+k,i} - \tilde{g}_{t,i})^2 \right]} \quad (1)$$

$\tilde{g}_{t,i}$  is the mean of growth rates between  $t - 4$  and  $t + 5$ . The weighted growth of the standard deviation of real sales is then:

$$\sigma_{i,t}^w = \sqrt{\left[ \frac{1}{10} \sum_{k=-4}^{+5} \omega_{it} (g_{t+k,i} - \tilde{g}_{t,i})^2 \right]} \quad (2)$$

where  $\tilde{g}_{t,i}$  is the average rate of growth of real sales for the *ith* firm between periods  $t - 4$  and  $t + 5$ . The weight  $\omega_{it} = S_{it} / \sum_{j=1}^N S_{jt}$ , where  $N$  is the number of firms in any given year. The results are shown in Figure 1 below where we plot the median of the distribution in each year. The estimates are computed using data from 1950 up to 2015. Because of the forward looking terms the last point is 2011.

---

<sup>1</sup>We deflate using the CPI. We exclude financial firms, standard industrial classification 6000-7000.

Comin and Mulani (2006) use volatility data up to 1997. We observe that volatility peaked at about 2000 and declined thereafter, but by 2011 it was still at levels higher than in the first half of the 1990s. In Figure 2 below we treat to data on individual firms in a different way. We aggregated the data on the real sales of firms first, and then we calculated the moving average of the standard deviation of the total using the same formula as (1). In this case we observe a decline in volatility during the great moderation and an increase thereafter.

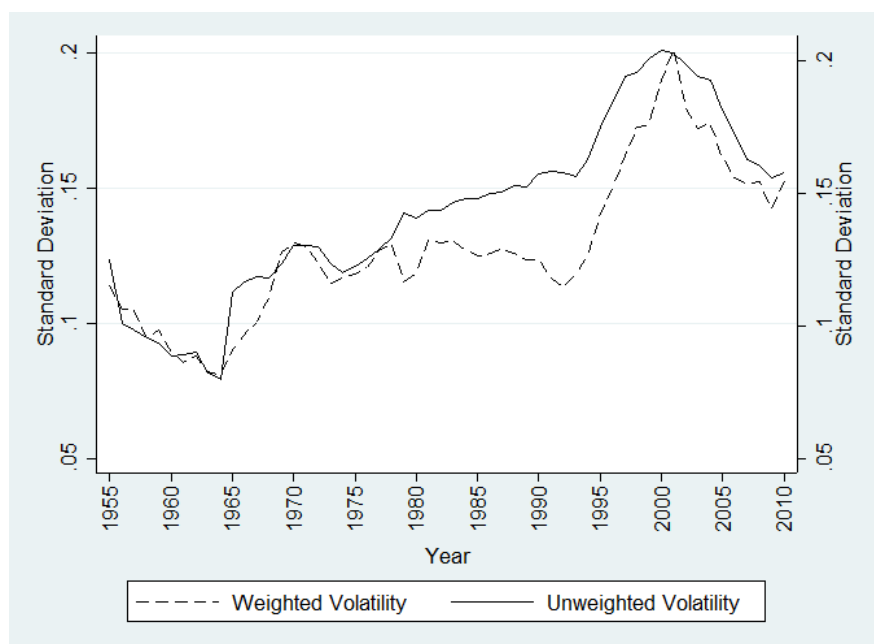


Figure 1. Firm Level Volatility.

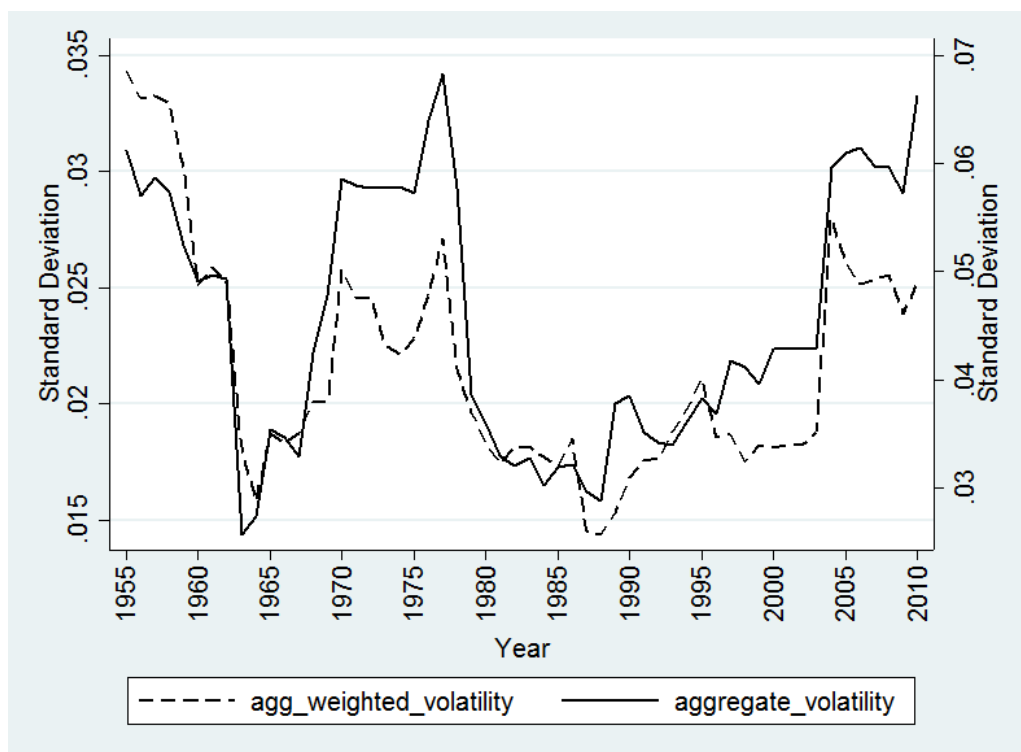


Figure 2: Volatility of aggregated quoted Firms

We used also real US GDP to calculate a similar measure of aggregate volatility. The results are shown below in Figure 3. In aggregate GDP figures a period of lower volatility is associated with the ‘great moderation’. From 2003 the forward-looking element kicks in with the financial crisis of 2008-9. Since the crisis there has been an increase in aggregate volatility. This is hardly surprising since the sum of sales of quoted companies accounts for a significant proportion of aggregate output.

One interpretation of these results is that by summing sales of firms first rather than looking at the median of individual firms’ sales volatility, the negative covariances between firms are cancelled out when we look at the aggregates figures. We take up this point in the next section and provide a simple model where negative covariances between firms arises from the market for corporate assets in which firms acquire assets from other firms or dispose of assets by selling to other firms.

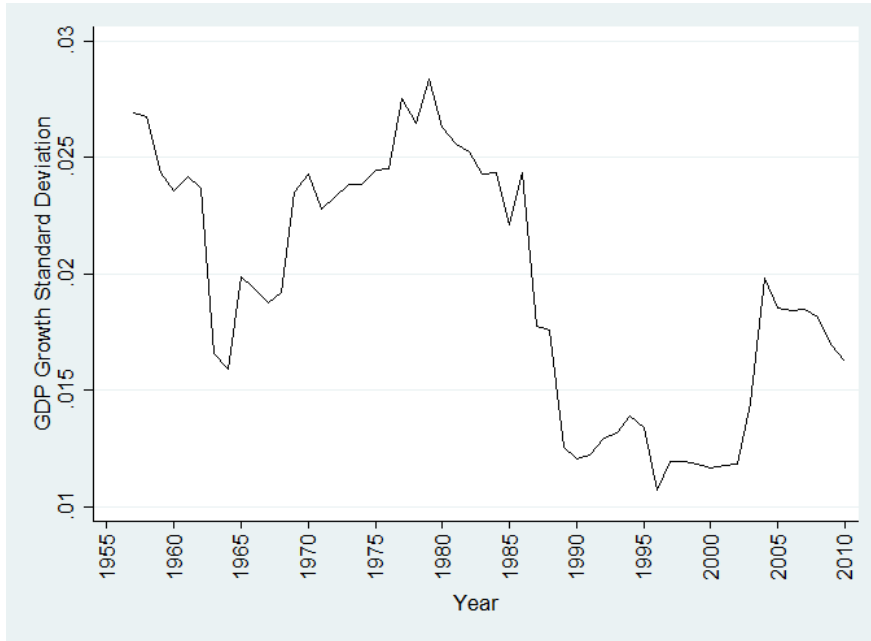


Figure 3: Volatility of real US GDP

### 3 Model

In this section we develop a model in which there is a market for corporate assets. A firm can grow by purchasing another firm or parts of it. If the firm wants to contract it can do so by selling off parts of its operations. If a firm acquires more assets usually its sales will rise, while if it disposes of assets sales will fall.

Consider a population of  $N$  firms. For simplicity the population of firms is constant, and there are no exits or entry. Let us assume, first, that Firms do not sell or acquire other businesses. At any given time,  $t$ , each firm,  $i \in \{1 \dots N\}$ , produces an output  $Y_{i,t}$ . We assume that production follows a stationary AR(1) process;

$$Y_{i,t} = y_i + \phi_i Y_{i,t-1} + \zeta_{i,t} + \varepsilon_t$$

where  $\zeta_{i,t} \sim iid(0, \sigma_i^2)$  represents a firm specific shock to output and  $\varepsilon_t \sim iid(0, \sigma_\varepsilon^2)$  represents an economy wide, or sector specific shock to output. The parameters  $y_i$ , and  $\phi_i \in (0, 1)$  are all assumed to be given exogenously.

Subtracting  $Y_{i,t-1}$ , we can write each firm's *individual organic growth* (i.e., firms' growth without any acquisitions and disposals) as;

$$g_{i,t}^o = \Delta Y_{i,t} = y_i + (\phi_i - 1) Y_{i,t-1} + \zeta_{i,t} + \varepsilon_t$$

The variance associated with this individual growth is then given by;

$$\sigma_{g_{i,t}^o}^2 = V_t [g_{i,t}^o] = \sigma_i^2 + \sigma_\varepsilon^2 + 2Cov(\zeta_{i,t}, \varepsilon_t)$$

We can also consider the *aggregate organic growth* of all firms,  $g_t^o = N^{-1} \sum_{i=1}^N g_{i,t}^o$ . The variance of this aggregate growth is given by;

$$\sigma_{g_t^o}^2 = V_t [g_t^o] = \sum_{i=1}^N \sigma_{g_{i,t}^o}^2 + 2 \sum_{i=1}^N \sum_{j=1}^i Cov (g_{i,t}^o, g_{j,t}^o)$$

where  $Cov (g_{i,t}^o, g_{j,t}^o) = Cov (\zeta_{i,t}, \zeta_{j,t}) + Cov (\zeta_{i,t}, \varepsilon_t) + Cov (\zeta_{j,t}, \varepsilon_t) + \sigma_\varepsilon^2$ .

Now let us suppose that firms can offset shocks by acquiring/disposing of productive assets from/to rival firms. Let  $a_{ijt}$  denote the net acquisitions of firm  $i$  from firm  $j$  at time  $t$ , and  $a_{it} = \sum_{j=1}^n a_{ijt}$  denote firm  $i$ 's total net acquisitions. Because the number of firms does not change, a firm only acquires some part of another firm. Note that  $a_{ijt} = -a_{jit}$ , since a positive net acquisition by  $i$  from  $j$  must be associated with an identical net disposal by  $j$  to  $i$ . It follows that the sum of all total net acquisitions must equal zero,  $A_t = \sum_{i=1}^n a_{it} = 0$ .

Assuming that acquisitions/disposals translate directly to output, we can now rewrite firms' production process;

$$Y_{i,t} = y_i + \phi_i Y_{i,t-1} + a_{it} + \zeta_{i,t} + \varepsilon_t$$

Subtracting  $Y_{i,t-1}$ , firms now have *individual total growth*  $g_{i,t} = \Delta Y_{i,t} = g_{i,t}^o + g_{i,t}^a$ , which is composed of their organic growth,  $g_{i,t}^o$ , and their acquisition/disposal growth,  $g_{i,t}^a = a_{it}$ . Thus, introducing the possibility of acquisitions and disposals allows firms to grow more or less than they would organically. The variance in firms' total growth is given by;

$$\sigma_{g_{i,t}}^2 = V_t [g_{i,t}^o + g_{i,t}^a] = \sigma_{g_{i,t}^o}^2 + \sigma_{g_{i,t}^a}^2 + 2Cov (g_{i,t}^o, g_{i,t}^a)$$

where  $Cov (g_{i,t}^o, g_{i,t}^a) = Cov (a_{it}, \zeta_{i,t} + \varepsilon_t)$ . This gives us our first result:

**Result 1:** Acquisitions or disposals increase (decrease) the volatility of a firm's growth if and only if  $\sigma_{g_{i,t}^a}^2 > (<) -2Cov (g_{i,t}^o, g_{i,t}^a)$ .

We now consider *aggregate total growth*,  $g_t = N^{-1} \sum_{i=1}^N g_{i,t} = N^{-1} \{ \sum_{i=1}^N g_{i,t}^o + \sum_{i=1}^N g_{i,t}^a \}$ . Crucially, noting that  $\sum_{i=1}^N g_{i,t}^a = A_t = 0$ , we have  $g_t = g_t^o$ . It follows that the variance of aggregate total growth is exactly the variance of aggregate organic growth (i.e.,  $\sigma_{g_t}^2 = \sigma_{g_t^o}^2$ ). This gives us our second finding:

**Result 2:** Acquisitions have no effect on the volatility of aggregate growth.

## 4 Acquisition and Disposal in Compustat and SDC

We argue in this section that insufficient account has been taken of the market for corporate assets. The SDC Platinum database from Thomson Financial provides a record of M&A deals that is now widely used as the source for economic research into takeovers<sup>2</sup>.

<sup>2</sup>See, for example, Harford (2005), Colak and Whited (2007), Dong et al (2006), Rhodes-Kropf et al (2005), and Warusawitharana (2007).

We use SDC data to identify whether each Compustat firm had either acquired, or disposed, of subsidiaries in each financial year. The accounting impact of an acquisition or disposal is recorded by the ultimate holding company. By matching the cusip codes of SDC deal participants to the Compustat population we draw two, overlapping, sets of acquisitions and disposals: the population of acquisitions where the ultimate parent of the acquirer was a Compustat constituent. Both acquisitions and disposals were excluded if they involved a purchase or sale of a stake but no change of control, since control is the criterion for the target firm’s sales to be recognized or derecognized in the accounts of the ultimate parent company.

The SDC ‘effective date’ was used to associate, possible multiple, acquisitions and disposals to Compustat financial years. The effective date can be in any month of the year. The financial year also varies between firms. So when matching dates to the calendar year we have to bear in mind that there can be an element of ambiguity about in which calendar year the sales took place. Noting that the financial year varies between firms, it is important to understand how an acquisition or disposal affects the reported sales growth of the companies involved, period by period. Suppose company A buys a division from company B halfway through year  $t+1$ , and suppose A, B, and the division all have the same underlying organic growth rate,  $g$ . Effectively A is buying sales from B. In year  $t+1$ , A includes just half of the division’s sales for the year, while in year  $t+2$  it includes a full year’s sales from the division. In year  $t+3$ , the rate of sales growth returns to  $g$ . So in terms of annual growth rate in sales, company A experiences three inflection points. Company B’s reported sales are the mirror of this. So in terms of observed company/year growth rates, one transaction generates six inflection points.

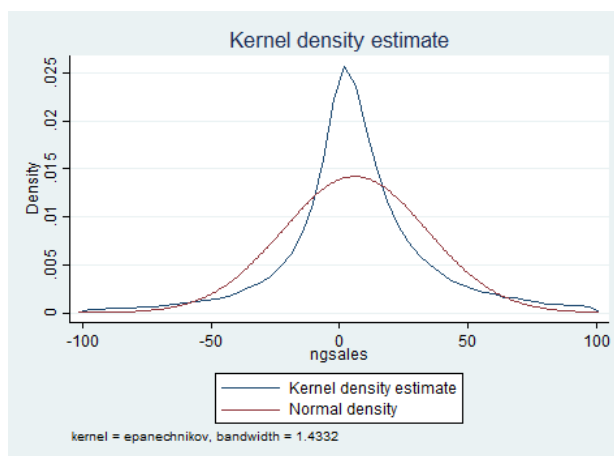


Figure 4: Kernel Density of All Firm’s real sales growth. 1950-2015. Winsorized at  $\pm 100$ .

Using observations for 1982 to 2015 from Compustat we have 204,975 firm/years. Figure 4 plots annual growth in real sales for this population as a kernel density, winsorized at  $\pm 100\%$ . Although the distribution is leptokurtic, with fat tails, it is symmetric with skewness of .0046, and standard deviation of 28.085. The mean is 5.99. So we are as likely to see a decline in sales as an increase.



For many empirical purposes in economics and finance it would be invaluable to see the components of total sales growth, excluding acquisition and currency effects to reveal organic growth. This disclosure is not required by GAAP. Some, usually larger, firms do disclose this data, but even this is not collected reliably by data providers.

There are a number of other data-consistency explanations why the observed volatility in sales growth in the Compustat population is not a direct correlate for GDP volatility.

- There were significant compositional shifts in the Compustat population over the period under review that affected its measured volatility. Compustat was underweight in smaller public companies before 1970, but became complete in the seventies and eighties. Subsequently, the profile of the quoted population itself changed when, in the technology boom of the 1990s, many very young and volatile firms were listed.

- Firm-level studies focus on the volatility of sales, whereas GDP is a measure of value added. Sales is a component of value added, but even if an increase in sales volatility is demonstrated at the firm level, we need to understand how the firm's cost structure mitigates this to yield value added. Firms can hedge profit and cash flow, but the reported sales number is unhedged.

- The reported sales and income of a multinational firm are the consolidated global sales of that firm and its subsidiaries, aggregated by converting the local results at the average exchange rate ruling during the period. The overseas element is not a component of US GDP. Suppose a firm is growing at 5% and has half its sales overseas. A 10% decline in its local currency versus the \$ over the year doubles the reported sales growth in the US.

SDC contains two promising fields, for the target's most recent sales, and for the transaction value. However the 'sales' field is only sparsely populated and, as other researchers have noted, the 'value' field is quite incomplete. Deal value is only available for slightly under half of transactions.

Hence we generated two dummy variables, a 0/1 indicator of acquisition/disposal activity in each company year; a partial value series, using SDC's reported values where available.

#### **4.1 Acquisitions and Disposals: The Market for Corporate Assets.**

In this section we use the SDC Platinum database to tabulate the extent of acquisition and disposal of corporate assets between 1982 and 2015. Maksimovic and Phillips (2001) report evidence for an earlier and overlapping period. They find that between 1974 and 1992 an average of almost 4 percent of large manufacturing plants changed ownership. There is a large literature on merger and acquisitions involving the sale of entire organisations<sup>3</sup>. But there is also a large and growing market for the partial disposal and acquisition of corporate assets. Figure 4 plots the total number of firms that acquired

---

<sup>3</sup>For some of this literature see Andrade et al (2001), Colak and Whited (2007), Denis and Shone (2005), Golbe and White (1988), Graham et al (2002), Harford (2005), Ming et al (2006), and Rhodes-Kropf et al (2005).

assets among the quoted population (excluding financial firms) or divested themselves of assets. Note that in any year a firm may repeatedly acquire firms or dispose of assets.

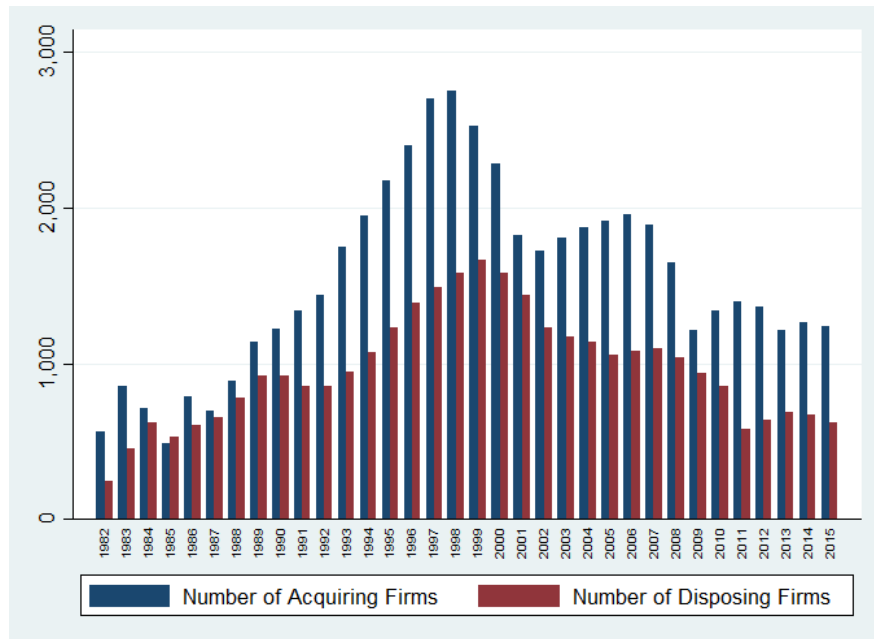


Figure 5: Number of firms that acquire and divest.

In Figure 6 we plot the proportion of firms that were involved in acquisitions or disposals. At the peak of each merger cycle more than 20 percent of US quoted companies

were involved in acquisition.

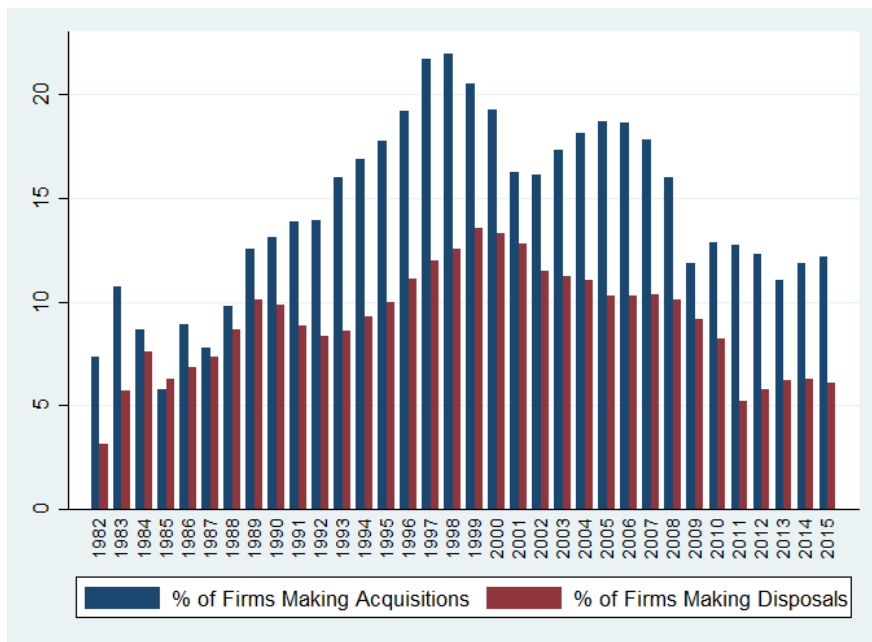


Figure 6: Percentage of firms acquiring or disposing of businesses.

The actual numbers in each year are shown in Tables 1 and 2<sup>4</sup>. The second column reports the total value at current prices (when we actually know the value). This peaks in 2000 at the height of the IT stock market boom and a merger and acquisitions upswing. The third column gives the total number of transactions and column 4 the number of firms involved in each year. Around the IT peak of 2000 about 20% of quoted firms were involved. In Table 2 we report divestitures. As with acquisitions divestitures peaked in 2000 with about 13% of firms involved. These tables draw attention to the enormous amount of churning in the corporate asset market as firms (often simultaneously) both acquire and divest assets.

## 4.2 Growth in Sales

In this section we turn to an analysis of the rate of growth of real sales by those firms who acquired or disposed of corporate assets in any given year compared to those firms that did not. The results for acquisitions and disposals are shown in Tables 3 to 6. In Table 3 we show the median of real sales growth for acquiring and non-acquiring firms, depending upon whether the acquisition took place in the current year. Column 2 shows average (nominal) sales in each year for all firms. Column 3 shows average growth rates of sales when the acquisition is in the current year. Column 4 shows the average growth of firms that did not make an acquisition in the current year. The differences in rates of sales

<sup>4</sup>These are after we have combined Compustat and SDC. There are firms in SDS that are not quoted (or are financial) that are not included.

Table 1: **Acquisitions: 1982 - 2015.**

<b>Year</b>	<b>Total Value (£Mil)</b>	<b>Transactions</b>	<b>Number of Firms</b>	<b>% of Firms</b>
1982	24397.02	796	559	7.35
1983	39773.06	1208	852	10.72
1984	53796.97	1009	710	8.68
1985	73845.87	664	489	5.80
1986	95481.14	1218	785	8.93
1987	79233.27	1041	695	7.81
1988	133440.4	1405	888	9.81
1989	142644.7	1881	1138	12.53
1990	77278.81	2036	1221	13.14
1991	72323.33	2208	1341	13.89
1992	66840.64	2412	1436	13.95
1993	107521.7	3154	1753	16.01
1994	178705.5	3767	1952	16.85
1995	293645.1	4178	2174	17.72
1996	317162.1	5115	2403	19.21
1997	564571.3	6579	2702	21.71
1998	892973.8	6773	2756	21.92
1999	971370.9	5665	2530	20.50
2000	1182243	4650	2287	19.26
2001	589560.1	3314	1821	16.23
2002	362108.7	3019	1728	16.11
2003	297232.4	3398	1808	17.28
2004	452812.4	3568	1874	18.13
2005	667705.2	4038	1919	18.72
2006	888904.8	4201	1959	18.65
2007	878743.5	4184	1887	17.83
2008	616574.3	3522	1652	16.00
2009	409811.3	2186	1215	11.88
2010	532224.6	2746	1340	12.85
2011	642470.9	3104	1400	12.74
2012	651370.1	2945	1366	12.31
2013	565934.9	2445	1212	11.01
2014	680298.6	2694	1264	11.83
2015	954938.1	2584	1243	12.18

Table 2: **Divestitures: 1982 - 2015.**

<b>Year</b>	<b>Total Value (£Mil)</b>	<b>Transactions</b>	<b>Number of Firms</b>	<b>% of Firms</b>
1982	28598.64	240	240	3.16
1983	19805.15	452	452	5.69
1984	53396.29	619	619	7.57
1985	62217.52	531	531	6.30
1986	75120.41	603	603	6.86
1987	71531.29	655	655	7.36
1988	99389.76	782	782	8.64
1989	89590.68	918	918	10.11
1990	91037.89	918	918	9.88
1991	38968.57	852	852	8.82
1992	38858.23	857	857	8.33
1993	49583.25	943	943	8.61
1994	98366.38	1073	1073	9.26
1995	132996.7	1227	1227	10.00
1996	227043.8	1392	1392	11.13
1997	319510.7	1491	1491	11.98
1998	574480.1	1580	1580	12.57
1999	647861.6	1669	1669	13.52
2000	759025	1582	1582	13.32
2001	705797.8	1437	1437	12.81
2002	247267.7	1234	1234	11.51
2003	224488.9	1174	1174	11.22
2004	276094.3	1140	1140	11.03
2005	564740.9	3641	1056	10.30
2006	825383.6	3748	1082	10.30
2007	993851.8	3708	1099	10.38
2008	734776.4	3317	1040	10.07
2009	652001.6	3021	938	9.17
2010	504353.8	2763	857	8.22
2011	199861.8	963	576	5.24
2012	224535	1084	639	5.76
2013	284210.1	1115	684	6.22
2014	304278.4	1170	670	6.27
2015	402129.8	1104	623	6.10

growth between acquirers and the firm average are shown in columns 5 and 6. There is a clear tendency for those firms that have made an acquisition in the current year to grow significantly faster than those firms that have not made an acquisition in the current year. A similar exercise for Disposals is shown in Table 5. Here sales growth rates for firms disposing of assets is significantly less than the firm average. However, in itself this is not necessarily evidence against the Comin/Mulana model. It may be that firms who are growing rapidly for other reasons are in a better position to make acquisitions, or firms that are in trouble may wish to divest themselves of assets<sup>5</sup>. We did the same exercise for the relationship between acquisitions and disposals in the previous year in Tables 4 and 6. Again the same pattern emerges. There are a number of firms that simultaneously acquire firms and divest in the same year as they rationalised their businesses. Acquisition or disposals may be unrelated to the underlying organic growth.

## 5 Estimation Results

In this section we turn to some estimation results. We regress in a panel with fixed effects the rate of growth of real sales against various measures of corporate asset market operations. In Table(7) two dummy variables are used.  $dv_t^{acq}$  takes a value of 1 if the firm acquired another firm in that year - whatever the actual value of the transaction - and zero otherwise. Likewise,  $dv_t^{dis}$  takes a value of 1 if a firm divests - whatever the value of the transaction - and zero otherwise. Although there is a large amount of noise with a very low  $R^2$  acquisitions are correlated with larger growth with real sales and disposals are correlated with lower growth. The first column includes firms for which we have at least 2 years of data. We include up to 2 lags in acquisitions and disposals, as we argued earlier that the effects are spread over three years. The next columns increase the minimum number of years up to at least 30 years, for which we still have data on more than 2000 firms. The reason for this is not using OLS with a lagged dependent variables comes up against the Nickell bias, but as the number of years exceeds 30 the bias disappears. Nevertheless, what we are going is to repeat the results of Tables 4 to 6, in a different way. There still remains a possible problem with endogeneity. In Table (8) we report a reduced form estimate of the model. These are consistent estimates and suggest that the dummy variable for acquisitions has a positive effect on sales growth and the dummy variable for disposals has a negative effect. In column 2 we control for firm-specific factors - Tobin's  $Q^6$ ,  $Q_t$ , and the change in the rate of profit,  $\Delta\rho_t$ , (ebitda divided by sales). In column 3 we control for common macroeconomic factors, the growth in real GDP,  $\Delta y_t$ , the inflation rate,  $\pi_t$ , the short term,  $rs_t$ , and long term,  $rl_t$ , interest rates and the real exchange rate,  $rex_t$ , (export prices divided by import prices). In column 4 we control both for firm-specific and common factors. Finally, in column 5

---

<sup>5</sup>Denis, D.K. and Shome, D.K. (2005) find that asset disposals are negatively related to operating performance at the firm and industry levels and positively related to the firm's debt ratio and its level of diversification. Empirically they study 130 publicly traded firms that each reduce their book value of assets by at least 25% in one fiscal year between 1985 and 1994.

It is easy to separate out firm that have increased/decreased the book value of total assets by more than some cutoff of 25%. For each year calculate percentiles for % change in the book value of total assets.

<sup>6</sup>We use the Tobin's Q constructed by Peters and Taylor (2017) for both tangible and intangible investment. We are grateful to Ryan Peters for making the data and definitions available .

Table 3: **The effect of acquisition on Sales Growth in current time period..**

Year	Median Sales Growth (%)			Deviation	
	All Firms	Acquirers	Non-Acquirers	Acquirers	Non-Acquirers
1982	-2.93	0.11	-3.21	3.04	-0.29
1983	4.41	8.44	3.86	4.03	-0.54
1984	7.83	12.40	7.45	4.57	-0.38
1985	2.52	7.47	2.24	4.95	-0.28
1986	4.42	9.27	3.93	4.85	-0.49
1987	6.58	12.41	6.08	5.83	-0.50
1988	6.53	11.71	5.81	5.18	-0.72
1989	2.77	7.82	1.99	5.05	-0.78
1990	0.49	6.59	-0.59	6.09	-1.09
1991	-1.38	3.09	-2.15	4.47	-0.77
1992	2.86	7.73	2.05	4.87	-0.82
1993	5.23	9.64	4.35	4.41	-0.87
1994	9.11	15.48	7.50	6.37	-1.61
1995	9.18	14.67	7.62	5.48	-1.57
1996	9.16	17.19	7.32	8.03	-1.84
1997	9.30	18.91	6.83	9.61	-2.47
1998	7.85	17.15	5.36	9.29	-2.50
1999	8.57	17.56	6.64	9.00	-1.92
2000	8.95	17.49	7.03	8.54	-1.92
2001	-0.83	4.28	-1.90	5.10	-1.07
2002	-0.69	3.30	-1.49	3.99	-0.80
2003	5.12	9.09	3.77	3.97	-1.35
2004	9.22	12.60	8.00	3.38	-1.22
2005	7.42	11.54	6.13	4.12	-1.29
2006	7.86	9.92	7.12	2.06	-0.74
2007	6.38	9.45	5.37	3.07	-1.01
2008	3.31	5.85	2.41	2.54	-0.90
2009	-6.46	-3.87	-7.09	2.58	-0.63
2010	7.52	9.49	7.01	1.98	-0.51
2011	6.11	9.56	5.05	3.45	-1.06
2012	2.14	4.74	1.52	2.60	-0.63
2013	3.30	5.32	2.81	2.03	-0.49
2014	4.59	6.46	4.02	1.87	-0.57
2015	1.31	3.68	0.75	2.37	-0.56

Table 4: **The effect of acquisition on Sales Growth in the previous time period.**

Year	Median Sales Growth (%)			Deviation	
	All Firms	Acquirers	Non-Acquirers	Acquirers	Non-Acquirers
1982	-2.93	0.41	-3.02	3.34	-0.10
1983	4.41	8.22	4.11	3.81	-0.30
1984	7.83	13.78	7.32	5.95	-0.51
1985	2.52	6.66	2.19	4.14	-0.32
1986	4.42	10.91	3.97	6.50	-0.45
1987	6.58	14.14	5.72	7.57	-0.85
1988	6.53	12.70	5.88	6.18	-0.65
1989	2.77	8.92	2.12	6.16	-0.64
1990	0.49	6.59	-0.46	6.09	-0.96
1991	-1.38	3.80	-2.07	5.18	-0.70
1992	2.86	8.86	1.92	6.00	-0.94
1993	5.23	10.47	4.42	5.25	-0.81
1994	9.11	16.31	7.83	7.20	-1.29
1995	9.18	16.59	7.44	7.41	-1.74
1996	9.16	16.44	7.64	7.28	-1.52
1997	9.30	18.80	7.31	9.50	-1.99
1998	7.85	18.39	5.32	10.53	-2.53
1999	8.57	14.62	6.72	6.06	-1.84
2000	8.95	15.08	7.23	6.13	-1.72
2001	-0.83	3.92	-1.98	4.75	-1.15
2002	-0.69	4.01	-1.61	4.71	-0.92
2003	5.12	10.19	3.70	5.06	-1.43
2004	9.22	14.56	7.77	5.34	-1.44
2005	7.42	12.11	6.10	4.69	-1.31
2006	7.86	9.70	7.32	1.84	-0.54
2007	6.38	8.29	5.75	1.91	-0.64
2008	3.31	5.90	2.35	2.59	-0.96
2009	-6.46	-5.09	-6.88	1.37	-0.42
2010	7.52	9.95	7.06	2.43	-0.46
2011	6.11	9.48	5.11	3.37	-1.00
2012	2.14	4.31	1.62	2.17	-0.52
2013	3.30	5.38	2.81	2.08	-0.48
2014	4.59	6.22	4.07	1.63	-0.52
2015	1.31	2.81	0.92	1.50	-0.40





Table 6: **The effect of disposals on sales growth in the previous year.**

Year	Median Sales Growth (%)			Deviation	
	All Firms	Disposers	Non-Disposers	Disposers	Non-Disposers
1982	-2.93	-5.85	-2.91	-2.92	0.02
1983	4.41	2.01	4.42	-2.39	0.02
1984	7.83	4.97	7.89	-2.86	0.06
1985	2.52	-1.92	2.72	-4.44	0.21
1986	4.42	-0.10	4.61	-4.51	0.19
1987	6.58	4.45	6.68	-2.13	0.10
1988	6.53	4.58	6.68	-1.94	0.16
1989	2.77	1.29	2.90	-1.47	0.13
1990	0.49	0.20	0.59	-0.29	0.09
1991	-1.38	-4.45	-1.03	-3.07	0.35
1992	2.86	0.61	3.22	-2.25	0.36
1993	5.23	0.66	5.68	-4.57	0.46
1994	9.11	4.72	9.67	-4.40	0.55
1995	9.18	6.10	9.60	-3.08	0.42
1996	9.16	4.82	9.73	-4.34	0.58
1997	9.30	3.85	9.98	-5.45	0.68
1998	7.85	4.80	8.28	-3.06	0.43
1999	8.57	4.33	9.14	-4.24	0.57
2000	8.95	4.00	9.55	-4.95	0.60
2001	-0.83	-4.37	-0.36	-3.54	0.47
2002	-0.69	-3.70	-0.26	-3.01	0.44
2003	5.12	2.70	5.34	-2.43	0.21
2004	9.22	6.99	9.61	-2.23	0.39
2005	7.42	4.08	7.81	-3.34	0.39
2006	7.86	4.35	8.34	-3.51	0.48
2007	6.38	4.15	6.83	-2.24	0.45
2008	3.31	1.27	3.64	-2.04	0.33
2009	-6.46	-9.45	-6.09	-2.99	0.37
2010	7.52	5.02	7.85	-2.50	0.33
2011	6.11	4.55	6.41	-1.57	0.29
2012	2.14	0.51	2.28	-1.63	0.14
2013	3.30	1.66	3.41	-1.63	0.11
2014	4.59	1.53	4.92	-3.06	0.33
2015	1.31	-5.41	1.90	-6.73	0.59

we estimate the reduced form for the model of column 4, treating the 2 dummy variables as endogenous.

**Table 7: Fixed Effects Panel Model**

	All years $\Delta s_t$	10 years + $\Delta s_t$	20 years + $\Delta s_t$	30 years + $\Delta s_t$
$\Delta s_{t-1}$	-0.0742*** [0.00206]	-0.0412*** [0.00218]	-0.0133*** [0.00260]	0.00922** [0.00332]
$DV_t^{acq}$	6.714*** [0.319]	6.222*** [0.310]	4.296*** [0.298]	2.842*** [0.310]
$DV_{t-1}^{acq}$	8.678*** [0.325]	7.738*** [0.318]	6.152*** [0.307]	5.270*** [0.321]
$DV_{t-2}^{acq}$	-2.950*** [0.328]	-2.962*** [0.320]	-2.612*** [0.310]	-2.418*** [0.325]
$DV_t^{dis}$	-11.82*** [0.401]	-11.11*** [0.387]	-9.546*** [0.367]	-7.753*** [0.365]
$DV_{t-1}^{dis}$	-6.440*** [0.416]	-5.527*** [0.400]	-4.253*** [0.378]	-3.582*** [0.377]
$DV_{t-2}^{dis}$	-3.964*** [0.424]	-3.705*** [0.406]	-3.314*** [0.381]	-2.590*** [0.378]
intercept	4.173*** [0.106]	4.122*** [0.104]	4.305*** [0.103]	4.079*** [0.107]
N	258051	223597	151529	93717
overall $lR^2$	0.0062	0.009	0.0109	0.0119

Standard errors in brackets

\*  $p < 0.05$ , \*\*  $p < 0.01$ , \*\*\*  $p < 0.001$

## 5.1 Goodwill, Total Assets, Acquisitions and Disposals.

So far we have used a relatively crude measure with a simple dummy variable to capture the way in which acquisitions and disposals affect sales growth. However, The US GAAP (generally accepted accounting principles) determines which asset are included on the balance sheet of a company. Typically, home grown intangible assets such as brands and patents are written off and do not appear in the balance sheet (Higson, 2012). However,

Table 8: Fixed Effects Panel Model. Firm specific and common aggregate controls.

	$\Delta s_t$	30 years + $\Delta s_t$	$\Delta s_t$	$\Delta s_t$	$\Delta s_t$
$\Delta s_{t-1}$	0.0121*** [0.00333]	0.0823*** [0.00411]	-0.0057 [0.00332]	0.0677*** [0.00411]	0.0706*** [0.00412]
$DV_t^{acq}$		2.320*** [0.229]	4.220*** [0.310]	3.182*** [0.229]	
$DV_{t-1}^{acq}$	5.208*** [0.310]	4.604*** [0.237]	6.529*** [0.320]	5.458*** [0.236]	5.756*** [0.233]
$DV_{t-2}^{acq}$	-2.806*** [0.318]	-2.133*** [0.241]	-1.129*** [0.324]	-1.259*** [0.240]	-1.243*** [0.239]
$DV_t^{dis}$		-4.989*** [0.275]	-6.822*** [0.362]	-4.544*** [0.271]	
$DV_{t-1}^{dis}$	-4.908*** [0.369]	-2.246*** [0.283]	-2.512*** [0.373]	-1.569*** [0.279]	-2.144*** [0.276]
$DV_{t-2}^{dis}$	-3.432*** [0.374]	-1.749*** [0.284]	-1.070** [0.376]	-0.706* [0.281]	-1.030*** [0.281]
$Q_t$		0.687*** [0.0727]		0.789*** [0.0712]	0.795*** [0.0715]
$Q_{t-1}$		0.957*** [0.0797]		0.700*** [0.0784]	0.718*** [0.0787]
$\Delta \rho_t$		6.673*** [0.183]		6.016*** [0.180]	5.982*** [0.180]
$\Delta \rho_{t-1}$		3.069*** [0.184]		2.617*** [0.180]	2.653*** [0.181]
$\Delta y_t$			142.3*** [6.544]	141.1*** [6.162]	142.0*** [6.186]
$\Delta y_{t-1}$			-15.55** [5.815]	-22.36*** [5.266]	-23.18*** [5.286]
$\pi_t$			56.53*** [11.94]	64.68*** [10.84]	64.28*** [10.87]
$\pi_{t-1}$			-61.21*** [10.19]	-48.41*** [9.191]	-48.00*** [9.219]
$rs_t$			0.646*** [0.125]	0.249* [0.103]	0.246* [0.103]
$rs_{t-1}$			-0.173 [0.126]	-0.427*** [0.106]	-0.409*** [0.106]
$rl_t$			-0.136 [0.214]	-0.1 [0.173]	-0.123 [0.173]
$rl_{t-1}$			-0.19 [0.171]	0.507*** [0.146]	0.503*** [0.146]
$rex_t$			-10.03* [4.291]	-26.06*** [4.318]	-25.86*** [4.335]
$rex_{t-1}$			29.24*** [4.271]	39.26*** [4.027]	38.54*** [4.042]
intercept	4.024*** [0.104]	2.696*** [0.113]	-2.228*** [0.592]	-5.292*** [0.609]	-5.020*** [0.600]
N	93717	58145	93717	58145	58145
overall $R^2$	0.007	0.073	0.038	0.107	0.100

Standard errors in brackets

\* p&lt;0.05, \*\*p&lt;0.01, \*\*\* p&lt;0.001

if a company acquires another company this is recognised in the balance sheet and total assets should change to reflect the acquisition/disposal of assets. Companies can report a breakdown of the acquired/disposed assets, but this has only started to appear in Compustat since 2010.

A company acquires tangible assets (Property, Plant & Equipment), inventory, loans, assets, other long-term assets, and intangibles and finally goodwill. Goodwill is the residual item measuring the difference between the price paid for an acquisition and the carrying values of the identifiable assets and liabilities acquired. In turn the acquired assets (including goodwill) are added to/subtracted from total assets in the balance sheet. However, some part of an increase in total assets will also reflect the underlying organic growth of the company. In Table (9) we add the change in the log of real total assets,  $\Delta ta_t$ . This turns out to be a highly significant addition to the model with the overall  $R^2$  increasing to over 37 percent, compared to the results in Tables (7) and (8). The inclusion of real total assets reduces the size and the significance of the 2 dummy variables for acquisitions and disposals. In the second equation in Table (9) we drop the dummy variables entirely, reducing the  $R^2$  only very slightly.

## 5.2 Endogeneity

In this section we try to take account of possible endogeneity of sales growth and acquisitions and disposals. In Table (10), we use the panel of (2177) firms that have more than 30 years of data over the period 1982 to 2014 using a GMM estimator with fixed effects. In the first column of results we endogenise only real total assets.<sup>7</sup> and use firm-level Tobin's Q and the change in real profitability as well of the exogenous aggregate variables as excluded instruments. The IV coefficient of  $\Delta \rho_t$  is much larger than the OLS estimate in Table (10), nevertheless, some overall tests of the model are not particularly good. There is a significant reduction in  $R^2$ , and while the Anderson LR statistic rejects the null that the excluded instruments are not relevant, the Cragg-Donald F statistic rejects a test for weak instruments. The Sargan test is a test of overidentifying restrictions. The joint null hypothesis is that the instruments are valid instruments, uncorrelated with the error term, and that the excluded instruments are correctly excluded from the estimated equation.

The second column of estimates includes the firm-level Tobin's Q and the change in profitability. The Craig-Donald F Statistic does not now reject the null, at least for the case if we set the maximum acceptable bias to 0.05 (i.e. we tolerate a bias of 5% relative to OLS). However, the Sargan test suggests that we should also include (some or all) of the aggregate variables. In column 3 we include aggregate growth, inflation and the lagged short term interest rate. The model now comfortably passes all of the tests.

---

<sup>7</sup>We use the IVREG28 code of Baum, Schaffer and Stillman (2007).

Table 9: **Fixed Effects Panel Model. Firm specific and common aggregate controls and change in real total assets.**

	$\Delta s_t$			$\Delta s_t$			
			30 years +				
$\Delta s_{t-1}$	-0.104*** [0.00416]	$rs_t$	-0.284** [0.0873]	$\Delta s_{t-1}$	-0.104*** [0.00416]	$rs_t$	-0.316*** [0.0874]
$DV_t^{acq}$	-0.520** [0.196]	$rs_{t-1}$	-0.0459 [0.0897]	$DV_t^{acq}$		$rs_{t-1}$	-0.0276 [0.0893]
$DV_{t-1}^{acq}$	2.508*** [0.202]	$rl_t$	0.148 [0.147]	$DV_{t-1}^{acq}$		$rl_t$	0.199 [0.147]
$DV_{t-2}^{acq}$	-0.345 [0.205]	$rl_{t-1}$	-0.0778 [0.124]	$DV_{t-2}^{acq}$		$rl_{t-1}$	-0.131 [0.123]
$DV_t^{dis}$	-2.420*** [0.230]	$rex_t$	-14.95*** [3.675]	$DV_t^{dis}$		$rex_t$	-14.25*** [3.682]
$DV_{t-1}^{dis}$	-0.115 [0.236]	$rex_{t-1}$	21.18*** [3.431]	$DV_{t-1}^{dis}$		$rex_{t-1}$	20.39*** [3.432]
$DV_{t-2}^{dis}$	0.454 [0.239]	$\Delta ta_t$	50.72*** [0.381]	$DV_{t-2}^{dis}$		$\Delta ta_t$	51.12*** [0.376]
$Q_t$	0.242*** [0.0611]	$\Delta ta_{t-1}$	25.36*** [0.433]	$Q_t$	0.233*** [0.0613]	$\Delta ta_{t-1}$	25.95*** [0.430]
$Q_{t-1}$	-0.0372 [0.0679]	$\Delta ta_{t-2}$	-1.933*** [0.370]	$Q_{t-1}$	-0.0334 [0.0681]	$\Delta ta_{t-2}$	-2.044*** [0.367]
$\Delta \rho_t$	3.968*** [0.154]	intercept	-2.959*** [0.519]	$\Delta \rho_t$	3.910*** [0.155]	intercept	-2.834*** [0.470]
$\Delta \rho_{t-1}$	0.890*** [0.155]			$\Delta \rho_{t-1}$	0.838*** [0.156]		
$\Delta y_t$	102.5*** [5.242]			$\Delta y_t$	102.0*** [5.253]		
$\Delta y_{t-1}$	-14.02** [4.485]			$\Delta y_{t-1}$	-13.07** [4.493]		
$\pi_t$	90.57*** [9.215]			$\pi_t$	89.95*** [9.206]		
$\pi_{t-1}$	-42.80*** [7.828]			$\pi_{t-1}$	-42.23*** [7.817]		
N	57619				57619		
overall $R^2$	0.3753				0.3725		

Standard errors in brackets

\*  $p < 0.05$ , \*\*  $p < 0.01$ , \*\*\*  $p < 0.001$

Table 10: Fixed Effects, GMM, IV Panel Model.

	$\Delta s_t$	$\Delta s_t$	$\Delta s_t$
$\Delta s_t$	-0.105*** [0.00795]	-0.0923*** [0.0118]	-0.106*** [0.0245]
$\Delta ta_t$	103.9*** [2.012]	67.21*** [5.735]	139.0*** [23.01]
$\Delta ta_{t-1}$	20.53*** [0.823]	26.90*** [1.671]	9.473* [3.920]
$\Delta ta_{t-2}$	-2.746*** [0.587]	4.880*** [1.136]	-17.20*** [4.133]
$Q_t$		-19.78*** [1.371]	-9.976 [5.552]
$Q_{t-1}$		14.06*** [1.168]	5.098 [3.537]
$\Delta \rho_t$		34.69*** [3.216]	-76.95*** [19.99]
$\Delta \rho_{t-1}$		9.956*** [1.063]	-23.68*** [5.968]
$\Delta y_t$			146.8*** [29.03]
$\Delta y_{t-1}$			-115.0*** [29.03]
$\pi_t$			153.4*** [28.75]
$\pi_{t-1}$			-119.0*** [27.49]
$rs_{t-1}$			-0.614*** [0.115]
N	56534	56070	56534
$R^2$	0.15	na	na
Anderson canon. corr. LR statistic	2953.8	202.8	17.7
Chi-sq P-val	0	0	0
Cragg-Donald F statistic	189.555	16.924	3.55
5% maximal IV relative bias	21.3	17.8	9.5
10% maximal IV relative bias	11.5	10	6.6
Hansen-Sargan J statistic	1472.2	201.8	1.92
Chi-sq(15) P-val	0	0	0.383
Endogeneity test	764	1179.3	206.3
Chi-sq P-val	0	0	0
Instrumented included instruments	$\Delta ta_t$ $\Delta ta_{t-1}, \Delta ta_{t-2}$	$\Delta ta_t, Q_t, \Delta \rho_t$ $\Delta ta_{t-1}, \Delta ta_{t-2}$ $Q_{t-1}, \Delta \rho_{t-1}$	$\Delta ta_t, Q_t, \Delta \rho_t$ $\Delta ta_{t-1}, \Delta ta_{t-2}$ $Q_{t-1}, \Delta \rho_{t-1}$ $\Delta y_t, \Delta y_{t-1},$ $\pi_t, \pi_{t-1}, rs_{t-1},$
excluded instruments	$\Delta y_t, \Delta y_{t-1},$ $\pi_t, \pi_{t-1}, rs_t,$ $rs_{t-1}, rl_t, rl_{t-1},$ $rex_t, rex_{t-1}$	$\Delta y_t, \Delta y_{t-1},$ $\pi_t, \pi_{t-1}, rs_t,$ $rs_{t-1}, rl_t, rl_{t-1},$ $rex_t, rex_{t-1}$	$rs_t, rl_t, rl_{t-1},$ $rex_t, rex_{t-1}$
Standard errors in brackets	* p<0.05, **p<0.01,	*** p<0.001	

## 6 Conclusions

We provide evidence to suggest that the apparent increase in the volatility of individual firms during a period of lessening volatility at the aggregate level can be directly related to the market for corporate assets with many firms acquiring assets or divesting assets, sometimes at the same time. First, we replicate and update the work of Comin and Philippon (2005) and Comin and Mulani (2006). The median volatility of individual firms peaked in about 2000, but still remained at levels higher than in the mid 1990s. However, when we summed up the real sales of all quoted companies and examined the volatility of the aggregate, this aggregate behaved in a similar way to the volatility of GDP, with declining volatility during the great moderation and rising volatility after 2007. This suggests that there was negative covariances between firms that cancelled out in the aggregate. We then proposed a simple model in which in the market for corporate assets, firms that grow rapidly tend to have acquired other firms, while firms that have negative growth have disposed of assets. To test this we turned to an alternative source of information on acquisitions and disposals because Compustat over most of the sample was seriously incomplete in recording acquisitions and disposals. With information on in which year a firm acquired assets or disposed of assets we showed that on average firms that grew more rapidly than the average tended to have acquired assets, while those growing more slowly than on average had disposed of assets. We also reported some estimation results which re-inforced our findings. Moreover, it turned out that while Compustat was not very good at recording acquisitions, the change in the total assets of the firm do reflect acquisitions and disposals indirectly and we find a strong relationship between the growth of the firm and the change in total assets, even when we allow for the undoubted endogeneity between growth, acquisitions and disposals.

But the question still remains: why are acquisitions and divestitures such an important part of the ways in which firms operate? Acquiring another firm may be an easy way of acquiring a patent or technology rather than investing directly in R&D, and some of this needs to be reflected in models of R&D and economic growth as, for example in the work of Xu (2017).



## References

- [1] Andrade, G., Mitchell, M., Stafford, E. (2001). "New evidence and perspectives on mergers". *Journal of Economic Perspectives* 15, 2, 103-120.
- [2] Andrade, G., Stafford, E. (2004). "Investigating the economic role of mergers". *Journal of Corporate Finance* 10,1, 1-36.
- [3] Baum, C.F., Schaffer, M.E. and Stillman, S. (2007). "Enhanced routines for instrumental variables/generalized method of moments estimation and testing," *Stata Journal*, StataCorp LP, 7, 4, 465-506.
- [4] Buch, C. M., Döpke, J. and Stahn, K. (2008). "Great moderation at the firm level? Unconditional versus conditional output volatility," Discussion Paper Series 1: Economic Studies 2008,13, Deutsche Bundesbank, Research Centre.
- [5] Blanchard, O. J., and. Simon, J. (2001). "The Long and Large Decline in U.S. Output Volatility". *Brookings Paper on Economic Activity*, 1, 135-164.
- [6] Doytch, N., Uctum, M. (2011). "Sectoral growth effects of cross-border Mergers and Acquisitions". *Eastern Economic Journal*, 38, 3, 319–330.
- [7] Hyunbae Chun & Jung-Wook Kim and Morck, R. (2011) "Varying Heterogeneity among U.S. Firms: Facts and Implications". *The Review of Economics and Statistics*, MIT Press, 93, 3, 1034-1052.
- [8] Campbell, J. Y., Lettau, M., Malkiel, B. and Xu, Y. (2001) "Have Individual Stocks Become More Volatile? An Empirical Exploration of Idiosyncratic Risk". *Journal of Finance*, 56, 1, 1-43.
- [9] Chaney, T., Gabaix, X. and Philippon, T. (2002): "Firm Volatility" . Mimeo, MIT.
- [10] Colak, G. and Whited, T.M. (2007) "Spin-offs, divestitures and conglomerate investment". *Review of Financial Studies* 20, 557-595.
- [11] Comin, D. and Philippon, T. (2005) "The Rise in Firm-Level Volatility: Causes and Consequences". *NBER Macroeconomics Annual* 20, eds. M. Gertler and K. Rogoff, The University of Chicago Press, 167-201.
- [12] Comin, D. and Mulani, S. (2006) "Diverging Trends in Aggregate and Firm Volatility". *Review of Economics and Statistics*, vol. 88, 2, 374-383.
- [13] Comin, D. and Mulani, S. (2009) "A Theory of Growth and Volatility at the Aggregate and Firm Level". *Journal of Monetary Economics* 56, 8, 1023-1042.
- [14] Comin, D., Groshen, E. and Rabin, B. (2009) "Turbulent Firms, Turbulent Wages?" *Journal of Monetary Economics* 56, 1, 109-133.
- [15] Davis, S.J., Haltiwanger, J. and Jarmin, R. and Javier, M. (2007.) "Volatility and Dispersion in Business Growth Rates: Publicly Traded versus Privately Held Firms," NBER Chapters, in: *NBER Macroeconomics Annual*, 21, 107-180. National Bureau of Economic Research, Inc.

- [16] Denis, D.K. and Shome, D.K. (2005), An empirical investigation of corporate asset downsizing, *Journal of Corporate Finance*, 11, 427-48.
- [17] Golbe, D.L. and White, L.J. (1988) "Mergers and Acquisitions in the US Economy: An Aggregate and Historical Overview", in Auerbach, A. (ed) *Mergers and Acquisitions*,
- [18] Gort, M. (1969). "An Economic Disturbance Theory of Mergers". *Quarterly Journal of Economics*. 83, 4, 624-642.
- [19] Graham, J. R., Lemmon, M. L. and Wolf, J. G. (2002) "Does Corporate Diversification Destroy Value?" *Journal of Finance*, 57, 2, 695-721.
- [20] Franco, F., Philippon, T. (2007) "Firms and Aggregate Dynamics". *Review of Economics and Statistics*. 89, 4, 587-600.
- [21] Harford, Jarrad (2005) "What drives merger waves?" *Journal of Financial Economics* 77, 529–560.
- [22] Higson, C. (2012) *Financial Statements: Economic analysis and interpretation*, Rivington Publishing, Cambridge.
- [23] Maksimovic, V., Phillips, G., (1998) "Asset efficiency and reallocation decisions of bankrupt firms". *Journal of Finance* 53, 1619–1643.
- [24] Maksimovic V. and Phillips, G.M. (2002), "The Market for Corporate Assets: Who Engages in Mergers and Asset Sales and Are There Efficiency Gains?", *Journal of Finance*, 56, 6, 2019-64.
- [25] McConnell, M., and Perez-Quiros, G. (2000). "Output Fluctuations in the United States: What Has Changed Since the Early 1980's". *American Economic Review*, 90, 5, 1464-1476.
- [26] Ming, D., Hirshleifer, D., Richardson, S. and Teoh, S. H. (2006) "Does investor misvaluation drive the takeover market?" *Journal of Finance* 61, 725-762.
- [27] Neuhaan, D. and Said, E. (2017) "Do Universal Banks Finance Riskier but More Productive Firms?" Forthcoming, *Journal of Financial Economics*.
- [28] Peters, R.H. and Taylor, L.A. (2017) "Intangible Capital and the Investment-q Relation. Forthcoming *Journal of Financial Economics*.
- [29] Stock, J., and Watson, M. (2002) "Has the Business Cycle Changed and Why?" NBER Working Paper 9127.
- [30] Rhodes-Kropf, M., Robinson, D.T. and Viswanathan, S. (2005) "Valuation waves and merger activity: The empirical evidence", *Journal of Financial Economics* 77, 561-603.
- [31] Schlingemann, F.P., Stulz, R.M., Walkling, R.A.(2002) "Divestitures and the liquidity of the market for corporate assets". *Journal of Financial Economics* 64, 117-144.
- [32] Schoar, A., (2002) "Effects of corporate diversification on productivity". *Journal of Finance* 57, 2379-2403.

- [33] Servaes, H., (1991) "Tobin's Q and the gains from takeovers". *Journal of Finance* 46, 409-41
- [34] Warusawitharana, M. (2007) " Corporate Asset Purchases and Sales: Theory and Evidence". Federal Reserve Board, Finance and Economics Discussion Series, 2007-27.
- [35] Xu, J. (2017) "Growing through the merger and acquisition". *Journal of Economic Dynamics and Control*, 80, July, 54-74